

# Health Workforce 2021/22 Report Card

WA Primary Health Alliance aims to develop and sustain those working in the primary health care sector across our region. This report card shows how we are tracking in Western Australia in 2021/22 against key PHN Performance Outcomes and Indicators relating to health workforce.

## Commitment to General Practice



**\$5 million** GP funding for individual support, digital integration, enhanced practice support programs

**Established a GP Advisory Panel** in collaboration with RACGP WA and Rural Health West, and continued to support the regional Health Professionals Network alongside Rural Health West, The Rural Clinical School of Western Australia and WA Country Health Service

## Capacity Building



**43** primary care educational events held, for about 3,330 participants



**63** quality improvement visits made to general practices



**1** Community of Practice established, Project Echo Alcohol and Other Drug Network, with **122** participants and **7** sessions held



**Treating Alcohol and Drugs in Primary Care (TADPole):** 7 sessions run for 35 health professionals, increasing their capacity to provide alcohol and drug treatment and support

### Outcome

**Quality care:** Local workforce has suitable cultural and clinical skills to address health needs of PHN region

## COVID-19 Response



**4,120** COVID-19 related enquiries to our Practice Assist service, comprising 67% of enquiries for the year



**0.5** million items of personal protective equipment provided to primary care providers



**3098** users and **5524** page views of a suite of **11** web pages developed to provide health service providers with comprehensive information about COVID-19 relevant to their region.

### Outcome

**Quality care:** PHNs support general practices and other health care providers to provide quality care to patients

## Practice Support



**60,934** contacts  
with our Practice  
Assist service



About **100,000** page  
views and **37,000** unique  
visitors to our Practice  
Assist website

### Outcome

**Quality care:** PHNs support general practices and other health care providers to provide quality care to patients

## HealthPathways

Localised HealthPathways are an online clinical support tool for GPs



**60** pathways reviewed



**38** pathways localised  
to the WA context



**450,258**  
webpage views

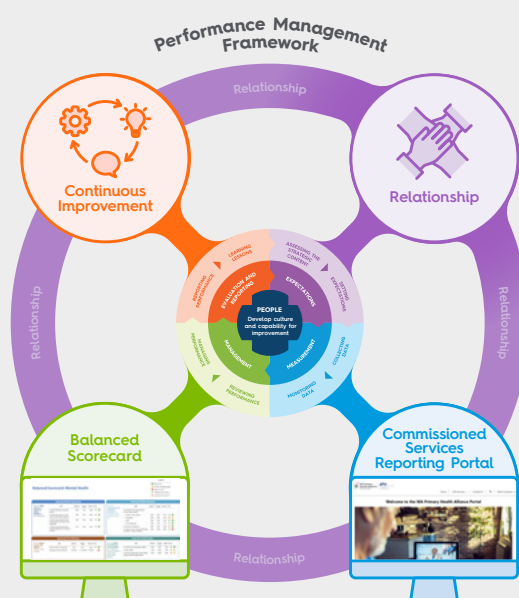


**20,723**  
unique visitors

### Outcome

**Quality care:** PHNs support general practices and other health care providers to provide quality care to patients

## Continuous Improvement



Developed a **Performance Management Framework** and **Commissioned Services Reporting Portal** to improve our recently developed Performance Management Framework and Commissioned Services Reporting Portal to support our service providers to deliver safe, high-quality, and reliable care whilst also providing us with better oversight of data, provider performance and patient outcomes.

### Outcome

**Capable organisations:** Operational activities of PHNs which support the successful delivery of the PHN Program

### Disclaimer

While the Australian Government Department of Health and Aged Care has contributed to the funding of this material, the information contained in it does not necessarily reflect the views of the Australian Government and is not advice that is provided, or information that is endorsed, by the Australian Government. The Australian Government is not responsible in negligence or otherwise for any injury, loss or damage however arising from the use or reliance on the information provided herein.