



Government of **Western Australia**
Department of **Health**

How good is primary care?

James Williamson
Clinical Excellence Division



Commit and collaborate to address major public health issue

Recommendations
1–5



Improve mental health outcomes

Recommendations
6–7



Great beginnings and a dignified end of life

Recommendations
8–9



Person-centred, equitable, seamless access

Recommendations
10–15



Drive safety, quality, and value through transparency, funding and planning

Recommendations
16–20



Invest in digital healthcare and use data wisely

Recommendations
21–22



Culture and workforce to support new models of care

Recommendations
23–27



Innovate for sustainability

Recommendations
28–29



Implementation

Recommendation
30

Public Health

Obesity

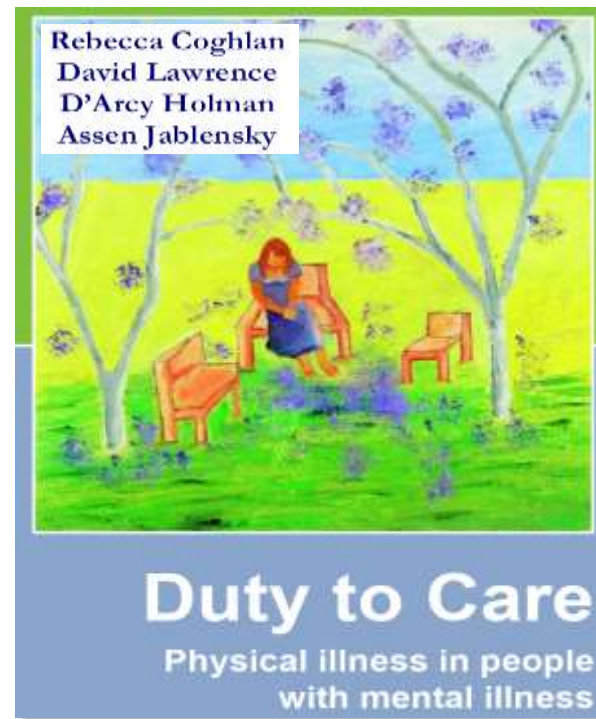
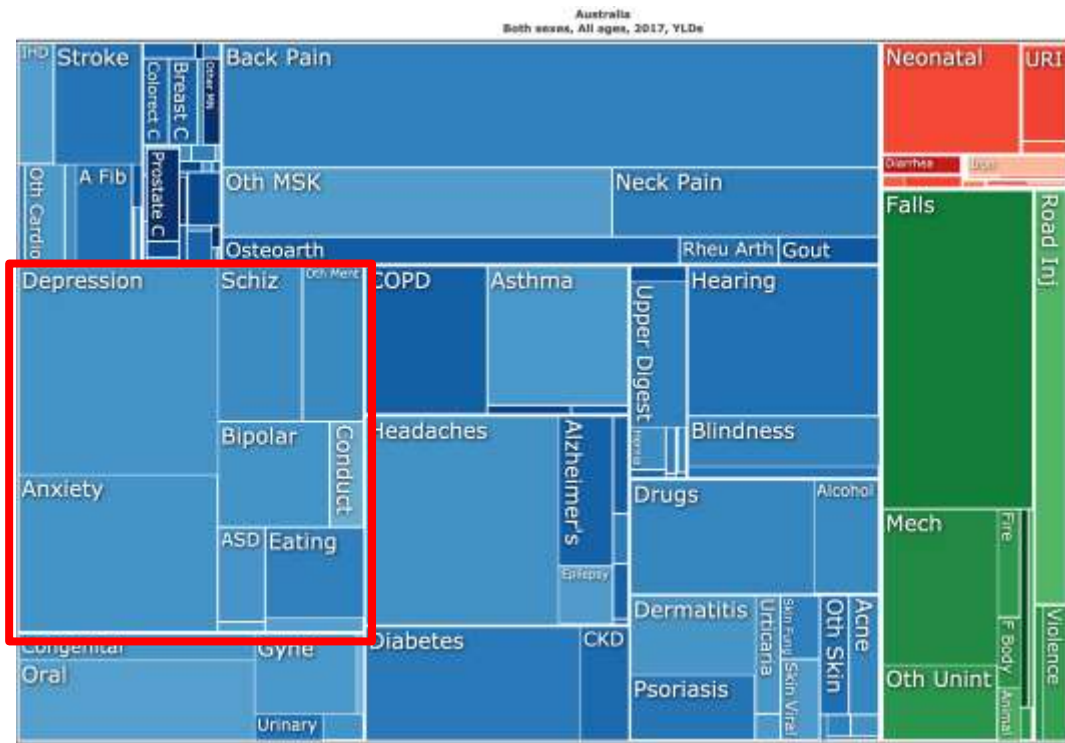


Public Health

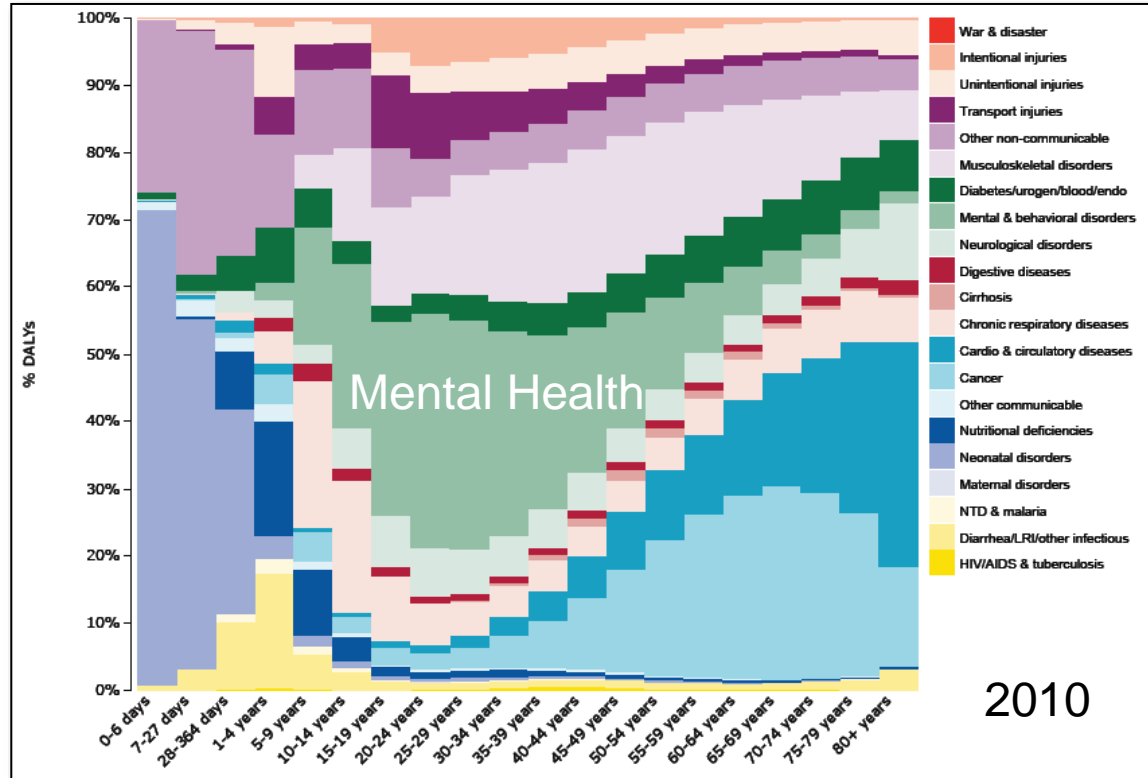


Obesity
Smoking
Alcohol
Exercise

Mental Health



Mental Health



2010

Beginning and End of Life



Palliative care
Goals of care
AHDs

Beginning and End of Life



Palliative care
Goals of care
AHDs
VAD

Beginning and End of Life



Palliative care

Goals of care

AHDs

VAD

Royal Commission

Equitable Access



Rural Generalists

Emergency Telehealth

Command Centre

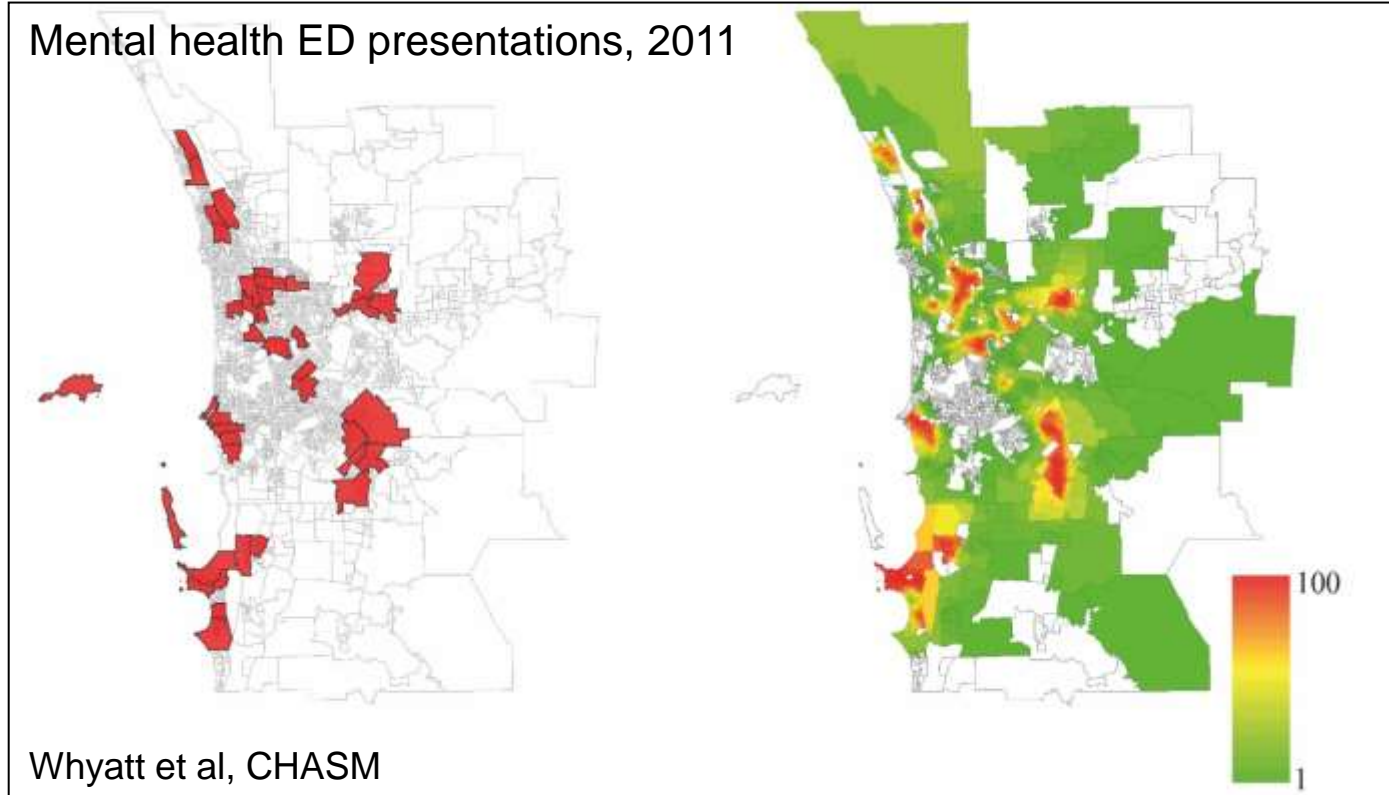
Funding & Planning

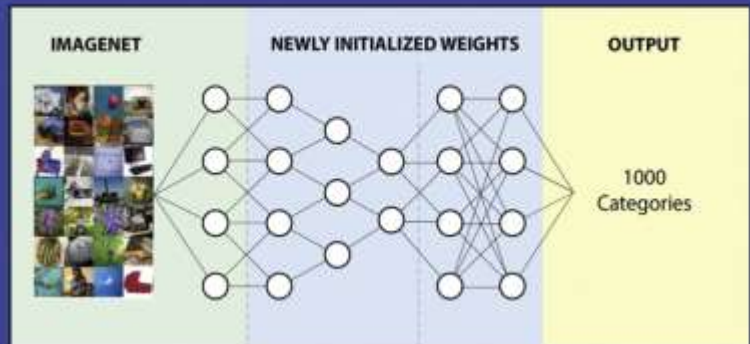


Urgent Care Clinics

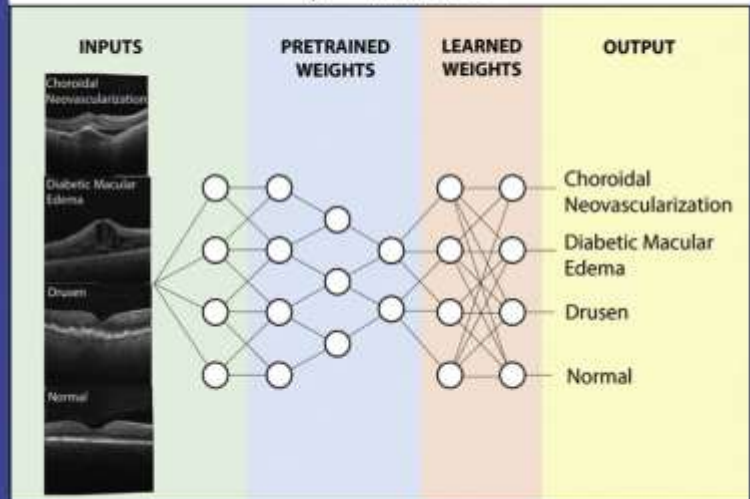
Commissioning

Data



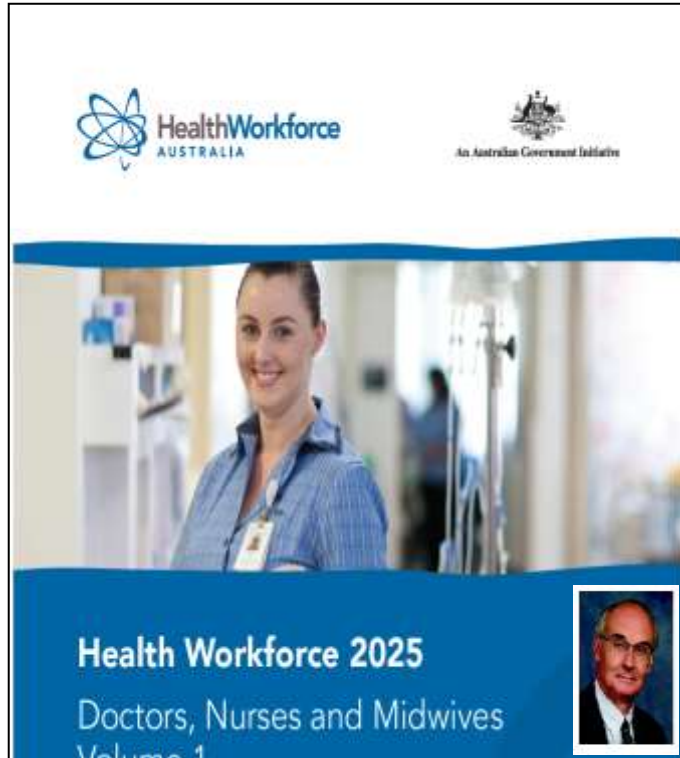


↓ **TRANSFER LEARNING**



Cell 2018 172, 1122-1131.e9DOI: (10.1016/j.cell.2018.02.010)

Workforce



General Practice

General Medicine

Psychiatry

Medical specialty	Initial workforce position	2017 workforce (n/a)	Net workforce movement in 2025				
			Completed scenarios	Service & workforce reform scenarios	Regular work reform scenarios	Medical AI scenarios	Optimised workforce reform scenarios
Anaesthetics		3,476	130	341	216	-71	88
Dermatology		420	-31	42	-10	-42	-44
Medicine		25,289	57	4,870	889	-3,831	9
General practice		3,17	35	184	185	9	-96
Cardiology and gynaecology		1,042	-142	221	-70	-202	-245
Ophthalmology		942	-142	28	-136	-224	-180
Anatomical pathology		706	-82	9	-136	-222	-180
Other clinical pathologist		400	-84	75	0	-84	-40
Cardiology		790	22	40	289	n.a.	134
Intensivist		442	28	182	88	n.a.	6
Cardiovascular and respiratory		3,018	127	393	224	n.a.	81
General medicine		2,07	14	144	48	n.a.	7
Medical oncology		348	92	184	136	n.a.	39
Nephrology		267	-18	46	18	n.a.	-44
Neurology		401	42	123	89	n.a.	17
Paediatrics		2,818	27	227	227	227	227
Psychiatry		2,981	-482	221	-274	-784	-498
Radiology		1,478	-266	2	-227	-540	-280
Radiation oncology		245	-27	22	-20	-42	-21
General surgery		1,181	219	629	832	400	276
Orthopaedic surgery		1,148	146	444	176	82	7
Otorhinolaryngology		442	180	229	182	184	181
Plastic surgery		326	70	124	81	29	21
Other surgery		866	170	284	186	111	24

Workforce



- Maldistribution
 - rural vs metropolitan
- Subspecialisation
 - cognitive vs procedural
- Working hours
 - feminisation & QoL
- Training
 - unlinked to demand

Innovation

Acute Assessment Unit Admission Proforma

Complete: [] **Seen:** [] **Date:** 25/1/15

HPC:
 2 multiple sclerosis presents & 2/7 Hx of lower abdominal crampy (suprapubic) pain, difficulty walking and effect of urine impacting on walking pattern. It has been unable to sleep due to pain. MRI indicates a sclerotic in (transverse/longitudinal) - It has also noticed some neurological deterioration. Bowel motions daily (regular) - no diarrhoea/constipation/melaena. Recently off from AAU on the 14/5/12 & continues/1/15, was diagnosed on clonidine/diazepam which she had been taking since - 1st last changed 1/15 ago.

Public: [] **Smoker:** []

14 drugs:
 1) Sample School - []
 2) Anxiety; Depression
 3) Chronic Back Pain
 4) Dementia - []
 5) Crush # (78)
 6) [] (on Rx. [])
 7) []
 8) []
 9) []
 10) []
 11) []
 12) []
 13) []
 14) []
 15) []
 16) []

Version February 2015

Recent D/C

Co-morbidity

Smoker

14 drugs

Year	Location	Transition
2013	SCGH	
2010	Fremantle	
2006		

SCGH

Transition

Fremantle



My Health Record



Commit and collaborate to address major public health issue

Recommendations
1–5



Improve mental health outcomes

Recommendations
6–7



Great beginnings and a dignified end of life

Recommendations
8–9



Person-centred, equitable, seamless access

Recommendations
10–15



Drive safety, quality, and value through transparency, funding and planning

Recommendations
16–20



Invest in digital healthcare and use data wisely

Recommendations
21–22



Culture and workforce to support new models of care

Recommendations
23–27



Innovate for sustainability

Recommendations
28–29



Implementation

Recommendation
30