

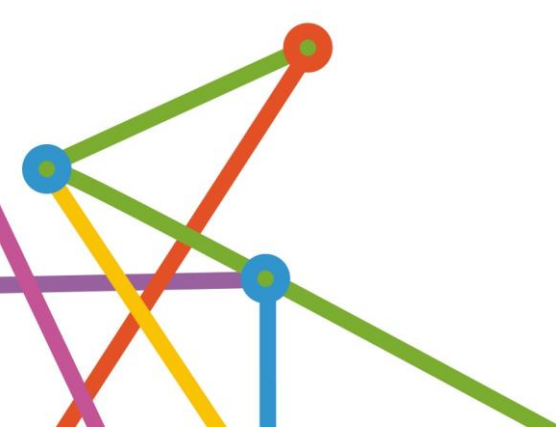


# PHN Activity Work Plan

**Summary View  
2020/2021 – 2023/24**

**PHN Pilots and Targeted Programs  
Perth South PHN**

**Presented to the Australian Government Department  
of Health**



# Contents

<b>PP&amp;TP-AHPGPE 1000 - COVID Allied Health Package GP Education.....</b>	<b>3</b>
--	----------

# PP&TP-AHPGPE 1000 - COVID Allied Health Package GP Education

## Activity Title

COVID Allied Health Package GP Education

## Activity Number

1000

## Existing, Modified or New Activity

New Activity

## Program Key Priority Area

Aged Care

---

## Aim of Activity

Deliver a general practitioner education package to general practitioners and other primary care providers in Perth South PHN which will include:

- the importance of providing allied health services to people with dementia and other residents with complex medical needs in Residential Aged Care Facilities.
- the new temporary Medicare Benefits Schedule allied health and mental health items for residents of aged care facilities.
- how the new Medicare Benefits Schedule items can be used to support the residents.

---

## Description of Activity

Three education sessions will be conducted for general practitioner and for other relevant primary care practitioners, in Perth South PHN between April 2021 and June 2022. These will be a mix of virtual sessions and face to face sessions where practical.

Practitioners who have patients who are resident in Residential Aged Care Facilities will be the priority for these sessions.

These sessions are being supplemented by a wider general practitioner education package including:

- the expansion and further localising of the existing HealthPathways WA Older Adult Health Pathways and the development of new pathways based on common areas of concern which is currently being completed.
- dedicated Practice Assist information page for general practitioners who have patients in Residential Aged Care Facilities including relevant Factsheets' <https://www.practiceassist.com.au/The-Tool-Kit/Medicare-Australia>
- WA Primary Health Alliance promotion of other training opportunities for general practitioner's that highlight the importance of providing allied health services to people with dementia and other complex needs residing in Residential Aged Care Facilities.

This activity will be made available to all general practitioners and other primary carers across the PHN Region but will prioritise practitioners who have patients who are resident in Residential Aged Care Facilities.

### WAPHA Needs Assessment Priorities

Priorities	Page reference
PSGP1.13 Improve the management of chronic conditions for ageing populations, including a reduction in unnecessary hospitalisations, an increase in palliative care services, advanced care planning.	94
PSMH2.10 Support the mental health of older people and assist primary care providers to identify older people who may need additional support or referrals to services.	100

### Coverage

The whole Perth South PHN region.

### Activity Duration

Activity Start Date 22 February 2021

Activity End Date 30 June 2022

### Activity Planned Expenditure

Funding Stream	FY 20 21	FY 21 22	FY 22 23	FY 23 24	Total
COVID Allied Health Package GP Education	\$5,000.00	\$10,000.00	\$0.00	\$0.00	\$15,000.00
Total	\$5,000.00	\$10,000.00	\$0.00	\$0.00	\$15,000.00