

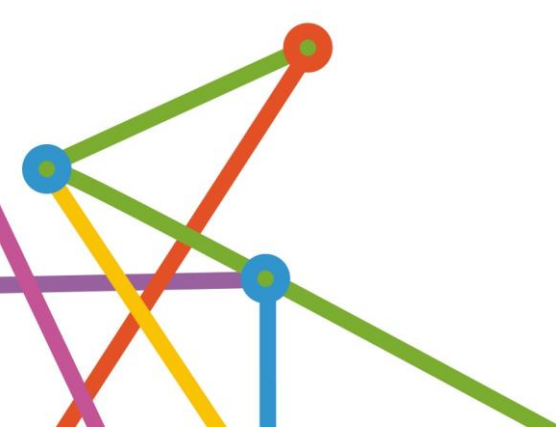


PHN Activity Work Plan

**Summary View
2020/2021 – 2023/24**

**Integrated Team Care
Country WA PHN**

**Presented to the Australian Government Department
of Health**



Contents

ITC 1000 - Enhancing Care	3
ITC 2000 - Culturally competent mainstream services	7
ITC 3000 - ITC Country to City - Improving Patient Transitions Project	10
ITC 4000 - IHPO Digital Content Package	13

ITC 1000 - Enhancing Care

Activity Title

Enhancing Care

Activity Number

1000

Existing, Modified or New Activity

Existing

Program Key Priority Area

Aboriginal and Torres Strait Islander Health

Aim of Activity

To grow the Integrate Team Care (ITC) Enhancing Care integration, effectiveness, and outcome focused service model to meet the aims and objectives of the ITC Program.

The Primary Health Network (PHN) will work with ITC teams to:

- Strengthen links and program integration across WA PHNs to improve patient outcomes.
 - Support workforce development.
 - Enhance the capacity of the ITC workforce to support a client's ability to self-manage their chronic condition through use of Flinders My Health Story care planning.
 - Support ITC providers to embed a Quality Improvement framework to support ongoing quality and performance of the ITC activity.
 - Improve program reporting will aim to improve patient/clinical outcomes, improved patient experience, system integration and safety and quality (including staff experience).
-

Description of Activity

Activities to achieve the aims and objective of the ITC Program and to build an effective and sustainable ITC Program in WA were identified in the Curtin University Evaluation report - "Project Illuminate" Stage 2.

1. Recommendations from the Curtin University Evaluation report that will continue to guide activities include:
 - Contract Relationship Management ensuring delivery of services in line with the ITC Implementation Guidelines and submitted budget using relationship meetings to identify both program barriers and enablers to delivery of the ITC program, as well as progress discussion on planned activity.
 - Convening regular program meetings between Place Based Teams focusing on ITC service implementation activities.
 - Maintaining and promoting the 'ITC Community of Practice' hub on Primary Health

Exchange as a communication tool between the WA Primary Health Alliance and ITC providers.

- Developing and maintaining the WA Primary Health Alliance website ITC Provider Location Map, accessible by ITC providers, GPs, and consumers.
- Attending and providing feedback on any available national ITC/Aboriginal health network/s.

2. WA Primary Health Alliance will continue to work with ITC providers to build capacity, with the intent to:

- improve corporate and clinical governance.
- improve data collection and outcomes focused reporting.
- improve integration with other service providers (mainstream and Aboriginal Community Controlled Health Service).
- improve the patient journey to ensure stepped care model is applied.
- apply continuous quality improvement.
- support workforce development.

The ITC Program workforce are contractually obliged to adhere to and implement the ITC Implementation Guidelines (4-6). In addition:

- ITC workforce will adhere to ITC Standardised Processes. These support consistency across the 14 provider regions, which in turn supports ITC clients to access the program in a consistent manner across WA PHNs. e.g., Where it is necessary to travel from country to metropolitan Perth for health care.
- Care Coordinators will utilise 'Flinders My Health Story' care planning to assist patients to become self-managing.
- Indigenous Health Project Officers will assist developing and mapping referral pathways that incorporate available services at the local, regional, and jurisdictional level and ensuring such information is provided to WA Primary Health Alliance for inclusion in HealthPathways.
- Indigenous Health Project Officers will increase capacity of mainstream health service providers to deliver culturally appropriate primary care services.
- Outreach workers will encourage clients to register for [and utilise] a My Health Record.

3. Activities to support the development of the ITC workforce will include:

- Development of an ITC Handbook to support consistent and efficient provision and reporting of the program. This is inclusive of care coordination (including self-management) supplementary services processes, as well as quality activity planning and quality of reporting, further enhancing quality improvement activities. The ITC handbook will also provide clarity on interpretation of the ITC Guidelines. eg: the support of clients to transition from the ITC Program into Aged Care or a National Disability Insurance Scheme package.
- Conducting ITC workforce training needs analysis to inform the ITC workforce training plan. Current skills development identified include:
 - data collection use and reporting.
 - supporting clients to self-manage their chronic disease.

- use of Supplementary Services funds.
 - supporting ITC clients requiring mental health care.
 - interpreting the new ITC guidelines and reporting template.
- Increasing ITC staff knowledge and use of local data and planning tools to enhance/develop ITC program planning activity, including identifying the best approaches and outcomes in data capture, collection and reporting and utilising to review/improve ITC program delivery. WA Primary Health Alliance will implement a reporting dashboard to support ITC providers to share learnings across regions and promote consistency in program delivery.
 - Improve collaboration between the ITC Indigenous Health Project Officers and WA Primary Health Alliance practice support staff according to specific areas of expertise.
 - Increasing knowledge and skills of ITC staff to support ITC clients to better understand their chronic condition/s and how to manage via resource promotion, training, etc. with a view to enhance ITC client outcomes; support increased client flow through the ITC program.
 - Delivering training sessions on how to effectively and efficiently use the Supplementary Services Funding Pool to ensure good use of SS funds.
 - Increasing knowledge accessing Medicare Benefit Schedule Items to increase sustainability of ITC program.
 - Promoting professional development opportunities to support training to ITC providers, to both better support ITC clients requiring mental health support, but to also to support resilience in the ITC workforce.
 - Delivering training to both ITC teams and PHN staff in interpretation of the ITC guidelines and reporting template to ensure program delivery and client outcomes.
 - Supporting any commissioning/decommissioning activity relating to the ITC program, including any project develop/management/implementation.

The PHN will continue to monitor and assess the impact of COVID-19 on access to the primary health care services commissioned within this activity. Where required, the commissioned services may be modified, and additional services commissioned to help the PHN to continue to meet the aims of the activity and the needs of the priority target groups.

WAPHA Needs Assessment Priorities

Priorities	Page reference
CGP1.1 Increase access to primary care providers in areas of workforce maldistribution and support primary care providers to manage chronic conditions.	104
CMHP2.3 Increase access to early intervention services to prevent escalating acuity and reduce the burden on acute and emergency department services.	112
CGP1.5 Promote the effectiveness of digital health technologies to optimise patient care (telehealth).	106

CGP1.6 Work with Local Hospital Networks, primary care providers and other health service providers to reduce high rates for chronic disease morbidity and mortality.	107
CGP1.7 Work with Local Hospital Networks, primary care providers, other health service providers and Aboriginal groups to reduce disease trends in Aboriginal communities.	107
CGP1.11 Ensure all populations have access to accessible and equitable health care.	110

Coverage

The whole Country WA PHN region.

Activity Duration

Activity Start Date 1 July 2019

Activity End Date 30 June 2024

Activity Planned Expenditure

Funding Stream	FY 20 21	FY 21 22	FY 22 23	FY 23 24	Total
Integrated Team Care	\$3,933,749.79	\$4,770,972.80	\$4,864,378.56	\$4,937,344.68	\$18,506,445.83
Total	\$3,933,749.79	\$4,770,972.80	\$4,864,378.56	\$4,937,344.68	\$18,506,445.83

ITC 2000 - Culturally competent mainstream services

Activity Title

Culturally competent mainstream services

Activity Number

2000

Existing, Modified or New Activity

Existing

Program Key Priority Area

Aboriginal and Torres Strait Islander Health

Aim of Activity

To improve access to culturally competent mainstream primary care services (including but not limited to general practice, allied health, and specialist services) for Aboriginal and Torres Strait Islander people.

Description of Activity

Activity undertaken by the ITC program to build the cultural competency of mainstream general practice is supported by a number of nationally released resources and policies. These are frameworks based on sound evidence and consultation, informed by both Aboriginal and other key stakeholders.

The following national resources will inform Primary Health Network (PHN) ITC activity:

1. National ITC Implementation Guidelines: current data (Aboriginal people who are active patients of GP services).
2. National Cultural Respect Framework for Aboriginal and Torres Strait Islander Health 2016-2026.
3. National Safety and Quality Health Services Standards – User guide for Aboriginal and Torres Strait Islander Health.
4. National Framework for Continuous Quality Improvement in Primary Health Care for Aboriginal and Torres Strait Islander People 2018-2023.

WA Primary Health Alliance will continue to work with the primary health care network to improve cultural competence by promoting models of good practice, assisting primary health care providers to adopt culturally appropriate models of care for Aboriginal people, supporting increased uptake of Aboriginal specific chronic disease packages including PIP IHI and relevant Medicare Benefits Schedule items, supporting increased access to cultural awareness training that meets PIP IHI requirements, promoting the ITC program to primary care providers and community, and promoting the ITC Program as a culturally safe resource for primary care providers to partner with in their care of Aboriginal people with complex

chronic disease management needs.

In addition to implementing the above activity across the PHN, the PHN based Indigenous Health Project Officer (referred to in WA Primary Health Alliance as the Aboriginal Health Coordinator, will work both internally and externally to support delivery of culturally competent services.

This will be achieved by providing subject matter expertise to staff across the three WA PHNs, to improve integration of the ITC program with other PHN commissioned activity, providing a targeted approach supporting practices with higher numbers of Aboriginal patients, or practices that have registered their interest in improving cultural competence, and improving collaboration between PHN practice support staff and externally employed ITC Indigenous Health Project Officers.

The PHN will continue to monitor and assess the impact of COVID-19 on access to the primary health care services commissioned within this activity. Where required, the commissioned services may be modified, and additional services commissioned to help the PHN to continue to meet the aims of the activity and the needs of the priority target groups.

WAPHA Needs Assessment Priorities

Priorities	Page reference
CGP1.2 Support primary care providers to improve the management of patients with chronic conditions and reduce unnecessary hospitalisations through effective care pathways.	105
CGP1.14 Promote alternatives to Emergency Department care for non-urgent health conditions and increase access to GP after-hour services.	111
CGP1.6 Work with Local Hospital Networks, primary care providers and other health service providers to reduce high rates for chronic disease morbidity and mortality.	107
CA4.1 Work with primary care providers and Aboriginal groups to reduce disease trends in Aboriginal communities.	121
CA4.2 Increase access to Aboriginal specific services with an Aboriginal approach to cultural wellbeing, healing, and community empowerment.	121

Coverage

The whole Country WA PHN region.

Activity Duration

Activity Start Date 1 July 2019

Activity End Date 30 June 2021

Activity Planned Expenditure

Funding Stream	FY 20 21	FY 21 22	FY 22 23	FY 23 24	Total
Integrated Team Care	\$710,078.00	\$0.00	\$0.00	\$0.00	\$710,078.00
Total	\$710,078.00	\$0.00	\$0.00	\$0.00	\$710,078.00

ITC 3000 - ITC Country to City - Improving Patient Transitions Project

Activity Title

ITC Country to City (C2C) - Improving Patient Transitions Project

Activity Number

3000

Existing, Modified or New Activity

Existing

Program Key Priority Area

Aboriginal and Torres Strait Islander Health

Aim of Activity

The Integrated Team Care (ITC) Country to City (C2C): Improving Patient Transitions Project (the Project) was initiated in response to feedback relating to the difficulties of supporting Aboriginal patients who were off-Country and staying in metropolitan areas for health treatment. The feedback identified that the patient journey for Aboriginal people from country to Perth can be fragmented, inconsistent and may result in poor health and well-being.

The objectives of the Project are to:

1. Understand the extent of the issues and concerns regarding the transition of ITC clients, and those eligible for ITC, across WA.
2. Understand the good practice happening and to share relevant learnings on a state-wide basis.
3. Work with the health sector to develop solutions that will improve the experience and care of Aboriginal people with chronic conditions, promoting integrated, seamless care and optimal health outcomes for Aboriginal people.

The ITC activity aims to improve coordination of health and other care elements and improve the health journey of ITC clients across WA.

Over the duration of this Activity Work Plan, the Primary Health Network (PHN) aims to support providers to apply continuous quality improvement to the Country to City – Improving Patient Transitions Project, including but not limited to the service model, standardised processes and improving communication, information sharing and discharge planning.

Description of Activity

Activities to implement the Project align with recommendations from the ITC Country to City: Improving Patient Transitions (2018) Report published by WA Primary Health Alliance. The report focuses on practical solutions that can be implemented across WA to improve processes, promote consistency, and increase integration between organisations. The report concluded with 14 recommendations.

The Recommendations that will be addressed, prioritised, and enhanced during this period include (but not limited to):

Recommendation 1: Establish and implement a standardised intake, allocation, transfer, and discharge process for ITC.

Recommendation 2: Develop resources to support clients in preparing for travel, such as a checklist for journey planning, patient stories and videos. Promote and educate patients, community and health professionals on the availability and use of the resources.

Recommendation 3: Work with health service providers to explore ways of using digital health services to avoid unnecessary travel and facilitate care between regions.

Recommendation 6: Develop a service model for the provision of primary health and social services support for patients in Perth for treatment.

Recommendation 10: Advocate for improved discharge processes and continuity of care – where a patient has travelled to Perth or a regional centre due to an acute hospital admission.

Recommendation 11: Hold regular forums for ITC providers and key stakeholders to network, facilitate consistency, share innovation and jointly problem solve.

Recommendation 12: Promote uptake of My Health Record by ITC providers and the Aboriginal community.

Recommendation 13: Embed use of My Health Record into ITC workflows.

The PHN will continue to monitor and assess the impact of COVID-19 on access to the primary health care services commissioned within this activity. Where required, the commissioned services may be modified, and additional services commissioned to help the PHN to continue to meet the aims of the activity and the needs of the priority target groups.

WAPHA Needs Assessment Priorities

Priorities	Page reference
CGP1.2 Support primary care providers to improve the management of patients with chronic conditions and reduce unnecessary hospitalisations through effective care pathways.	105
CMHP2.1 Engage with Primary Health Care providers, Local Hospital Networks and Community Mental Health Services to improve transitions of care, care coordination and service linkages.	112
CGP1.14 Promote alternatives to Emergency Department care for non-urgent health conditions and increase access to GP after-hour services.	111

Coverage

The whole Country WA PHN region.

Activity Duration

Activity Start Date 1 July 2019

Activity End Date 30 June 2022

Activity Planned Expenditure

Funding Stream	FY 20 21	FY 21 22	FY 22 23	FY 23 24	Total
Integrated Team Care	\$457,809.37	\$0.00	\$0.00	\$0.00	\$457,809.37
Total	\$457,809.37	\$0.00	\$0.00	\$0.00	\$457,809.37

ITC 4000 - IHPO Digital Content Package

Activity Title

IHPO Digital Content Package

Activity Number

4000

Existing, Modified or New Activity

Existing

Program Key Priority Area

Aboriginal and Torres Strait Islander Health

Aim of Activity

To develop and deploy a digital content package for use by Indigenous Health Project Officer's (IHPO), which will enable streamlined onboarding, ongoing upskilling, and consistent delivery of key information for IHPOs.

The digital package will provide an easy-to-use tool for conversation with health professionals and will provide relevant program information in a variety of formats (video, animation, apps). The resources are designed to build the knowledge, skills, and confidence of primary health care professionals in managing Aboriginal and Torres Strait Islander patients, particularly in relation to the self-management of chronic conditions.

Description of Activity

Country WA Primary Health Network (PHN) team of IHPOs provide program leadership at the local level within the ITC Program.

A significant aspect of their role is to:

- develop and implement strategies to improve the capacity of mainstream primary care providers to deliver culturally appropriate primary care services to Aboriginal and Torres Strait Islander people.
- coordinate quality improvement activities and strengthening the integrated team-based approach to Aboriginal and Torres Strait Islander health within the service.

The size and breadth of the Country WA PHN region presents an ongoing challenge in ensuring the consistent upskilling, access to program resources and distribution of important updates to the ~17 FTE IHPO's distributed across WA.

To address this challenge, Country WA PHN will develop a digital content package to be delivered through an online platform to provide IHPOs with real time access to content which addresses:

Self-identification:

- uptake of Aboriginal and Torres Strait Islander specific Medicare Benefits Schedule items

including item 715 - Health Assessments for Aboriginal and Torres Strait Islander People, care planning and follow up items, and

- increasing awareness of and maximising links between services for Aboriginal and Torres Strait Islander people, including those provided by Commonwealth and state/territory governments.

The content created will be designed to ensure it is culturally appropriate, delivered as tailored bundles of credible health information and provide a mechanism for consistent rollout of training, content updates and announcements.

The digital content will enable the ITC Program in Country WA to continue to make significant steps towards improved integrated care and chronic disease self-management in Aboriginal and Torres Strait Islander communities.

WAPHA Needs Assessment Priorities

Priorities	Page reference
CGP1.9 Assist primary health care providers to adopt culturally appropriate models of care for Aboriginal populations, CALD groups.	108
CGP1.7 Work with Local Hospital Networks, primary care providers, other health service providers and Aboriginal groups to reduce disease trends in Aboriginal communities.	107

Coverage

The whole Country WA PHN region.

Activity Duration

Activity Start Date 01 January 2019

Activity End Date 30 June 2021

Activity Planned Expenditure

Funding Stream	FY 20 21	FY 21 22	FY 22 23	FY 23 24	Total
Integrated Team Care	\$117,069.00	\$0.00	\$0.00	\$0.00	\$117,069.00
Total	\$117,069.00	\$0.00	\$0.00	\$0.00	\$117,069.00