

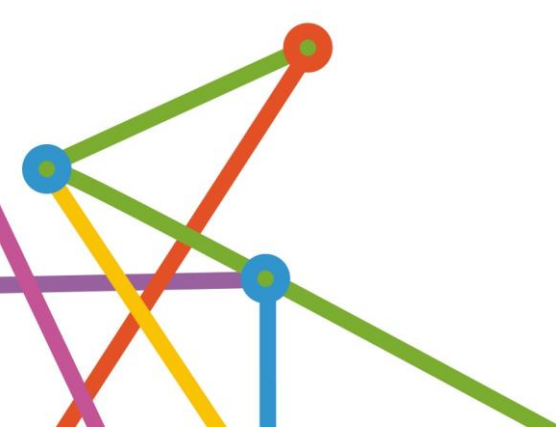


PHN Activity Work Plan

**Summary View
2020/2021**

**National Suicide Prevention Trial
Country WA PHN – Kimberley Region**

**Presented to the Australian Government Department
of Health**



Contents

National Suicide Prevention Trial Site - Kimberley	3
---	----------

National Suicide Prevention Trial Site - Kimberley

Activity Title

Suicide Prevention Trial Site - Kimberley

Existing, Modified or New Activity

Existing

Program Key Priority Area

Mental Health and Suicide Prevention

Activity Summary

Supporting priority activity on a longer-term basis

WA Primary Health Alliance has established a Steering Committee in partnership with WA Mental Health Commission during the period of transition. If any trial site activity is deemed to be in scope, the Mental Health Commission will work with relevant partners to review continuity options and/or referral options into other State based funded programs.

State Government agencies and non-government-organisations have been active participants in the governance of the trial. Those organisations include:

- Mental Health Commission
- WA Department of Health
- headspace
- Department of Premier and Cabinet
- Commonwealth Department of Health
- Kimberley Aboriginal Medical Services
- Kimberley Aboriginal Law and Cultural Centre
- Edith Cowan University – Centre for Best Practice
- Aboriginal Community Controlled Health Organisations
- Department Child Protection and Family Services

Some stakeholders will continue to deliver services post the trial period and all of those listed above, will influence future strategies and planning across the Kimberley region.

For individual or group services – plans that will be in place to safely transition and support clients

The governance structures will remain in place for the duration of the funding period to ensure recipients of service are safely transitioned to alternative services if required. WA Primary Health Alliance has commissioned a range of regional mental health services (i.e., Regional Mental Health PORTALS, headspace) who have capacity to accept referrals from general practitioners and other providers on an ongoing basis.

The Mental Health Commission funded Regional Coordinator, will also provide ongoing support to the network to sustain communication and enable better understanding of the referral pathways and other local support options.

Communicating the end of trial or transition to other programs and services with key stakeholders

WA Primary Health Alliance will work in partnership with the governance groups to communicate the cessation of the trial activities. The trial site Program Manager will monitor actions arising and ensure transition arrangements are completed in a timely manner. The Mental Health Commission funded suicide prevention coordinator will continue to communicate to the regional network. WA Primary Health Alliance will also utilise the skills, knowledge, and experience of the internal communications team to deliver key messages to community and enhance the community awareness through quality campaigns.

Key partnerships supporting transition and sustainability

WA State Government Departments, regional Aboriginal Medical Services and other regional service providers will play an essential role in supporting the transition and sustainability of any appropriate activity. The Mental Health Commission will also be retaining the Suicide Prevention Coordinator role in the region and that will enable coordination and facilitation of specific suicide prevention meetings for the purpose of helping shape future strategies and plans, such as the Western Australian Mental Health Alcohol and Other Drugs Services Plan 2015-2025 - Better Choices Better Lives; WA State priorities 2020-2024; and Western Australian Suicide Prevention Framework 2021-2025.

As a cornerstone to primary health care, general practitioners will also be an essential component of the transition. WA State Government are also finalising their response to the Coroner's report of the Inquest into the deaths of thirteen children and young persons in the Kimberley Region. The response will include an influx of funding into the region for the purpose of mental health, suicide prevention and alcohol and other drugs services.

The impact of COVID-19 on key activity and plans to address the impact

Some suicide prevention trial sites activities experienced a temporary closure of engagement due to limited access to remote areas. Automatic extensions to programs were granted to enable activities to be completed, including carry forward funds.

WA Primary Health Alliance will continue to use the Aboriginal and Torres Strait Islander Suicide Prevention Evaluation Project (ATSISPEP) Framework as a tool for decision making, to support community driven suicide prevention initiatives.

The trial will continue with the existing Working Group, and to ensure Aboriginal-led governance principles, and arrangements for inter-sector and inter-governmental collaboration continue.

Transition strategies and sustainability of existing suicide prevention trial activities

To support the transition and sustainability of Suicide Prevention Trial activities at the consultation of this Activity Work Plan, focus will occur on:

- Community-led suicide prevention activities
- Continued work with the young leaders in the region
- Intergenerational knowledge and learning
- Continued work to support general practitioners

- Continued work with traditional healers and integration with Primary Practice
- Suicide Prevention Trial evaluation
- Governance structures transition

Innovative ways of working have been demonstrated during the COVID-19 period and most activities have/will received an extension of time to complete their activities.

Key activities

Description of activity	FY20/21 Planned Expenditure (GST excl)	FY21/22 Planned Expenditure (GST excl)
<p>Wirnan Creative Project and Intergenerational Knowledge Location: Across Kimberley Art Centres Existing activity Activity end date: 30 June 2022</p> <p>This project has created better connectedness of the regional Art Centre's, using a communities of practice approach. The program has enabled intergenerational exchange of cultural learning between Elders and young people. The Art Centre's sustainability is not reliant on additional PHN funding.</p>	\$180,000.00	\$0.00
<p>Development of Traditional Healers Model: Location: Bidadanga & Fitzroy Crossing Existing activity Activity end date: 30 June 2022</p> <p>The project incorporates the use of western medicine and culturally sensitive traditional healing methods. This project will be evaluated to ascertain efficacy, model integrity and patient outcomes. Pending findings of the evaluation, this project may require additional funding from a relevant source.</p>	\$185,000.00	\$0.00
<p>Empowered Young Leaders Project Location: Across East and West Kimberley Existing activity Activity end date: 30 June 2022</p> <p>This activity has enabled young people to work with key stakeholders to inform a strategy for youth mental health in the region. Post-trial WA Premier and Cabinet have indicated that they will consider funding the program in the</p>	\$204,922.00	\$45,078.00

future.		
<p>Implement the No Wrong Door Approach Location: Across East and West Kimberley Existing activity Activity end date: 30 June 2022</p> <p>This activity will utilise a consultant to establish referral pathways and Memorandum of Understanding between key stakeholders of mental health and alcohol and other drugs services. Post-trial, this activity will transition to the Kimberley Drug and Alcohol Mental Health Sub-Committee.</p>	\$45,000.00	\$0.00
<p>Kimberley Aboriginal Medical Service for coordination Location: Across all activities. Existing activity Activity end date: 30 June 2022</p> <p>This activity has provided coordination of all activities during the trial period. This activity will cease upon completion of the trial. Post-trial positive relationships will remain in place as a legacy of the collaboration across the region.</p>	\$225,000.00	\$49,922.00
<p>Employment of local Aboriginal Community Liaison Officers Location: Wyndham, Balgo, Kununurra, Broome, Derby, Halls Creek, Fitzroy, Dampier Peninsula, Bidyadanga. Existing activity Activity end date: 30 June 2022</p> <p>This activity has enabled community representatives to work with key stakeholders to inform community led responses to suicide prevention. Post-trial WA Premier and Cabinet and National Indigenous Australians Agency have indicated that they will consider funding the program in the future.</p>	\$330,000.00	\$0.00
<p>Trial Evaluation New Activity FY20/21 Activity end date: 30 June 2022</p> <p>Conduct an evaluation of the pilot in adherence to the ATSIPEP model.</p>	\$110,000.00	\$0.00
<p>Various workshops and media campaign Existing activity. Activity end date: 30 June 2022</p>	\$45,195.00	\$30,000.00

<p>Dampier Peninsula Community Project Location: Lombadina Activity end date: 30 June 2022</p> <p>This activity will enhance community connections and pride through monthly cultural knowledge and exchange programs at both Lombadina and Beagle Bay communities. This activity will be enhanced by other trial activities including Social and Emotional Well Being workshops and the Wot Na Wot Kine campaign being delivered by Kimberley Aboriginal Medical Services Ltd.</p>	\$60,000.00	\$0.00
<p>Activity planned expenditure</p> <p style="text-align: right;">Total</p>	\$1,385,117.00	\$125,000.00

Data collection and reporting

A local evaluation of the trial will examine the extent to which community control over solutions to high rates of Aboriginal suicide was achieved in the trial initially and the extent to which community control has been continuously affirmed in all stages, levels, and locations in the Kimberley.

This examination should ascertain community-controlled needs assessment and planning, as well as decisions about resource allocation, implementation and prioritisation of early outcomes that matter to Aboriginal people.

The evaluation will also include success stories or stories of impact to collect ad hoc references. All contracted activities will report through the Primary Mental Healthcare National Minimum Data Set.

Recruitment and workforce

The existing two tiers of governance structures (Working Group and Steering Committee) for the trial site remain and will continue throughout the tenure of the program.

Coordination of the trial site activities will continue to be delivered by the existing contracted service providers and they will continue to facilitate the governance meetings that were established during inception of the program.

The governance groups and trial site coordinators will take responsibility of working with regional stakeholders to ensure that appropriate workforce capability and capacity exists to deliver each of the activities. Some of the activities listed are envisaged to continue post trial site, following State Government commitment, after the publication of the coroner's inquest into the deaths of 13 young children and young persons in the Kimberley Region. The Regional stakeholders will be working with State Government Departments and other

agencies to ensure transition arrangements are considered in the continuity planning of activities. The timeframes for implementation of State Government funding may impact on some of the activity business continuity plans.

Implementation of the trial site activities are also reliant on the trial site Working Group and Steering Group meeting schedule to endorse activity planning. Existing activities impacted by COVID-19 have been automatically carried forward, to enable trial activity to be completed and retention of the workforce.
