

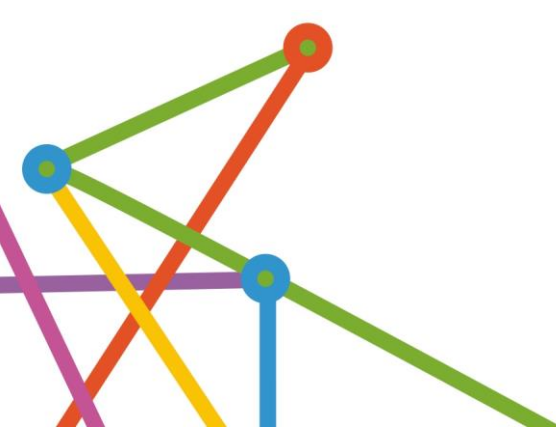


PHN Activity Work Plan

**Summary View
2020/2021 – 2023/24**

**Drugs and Alcohol Treatment Services
Country WA PHN**

**Presented to the Australian Government Department
of Health**



Contents

AOD 1100 - Specialist Treatment in Areas of High Need - Aboriginal (NIAS)	3
AOD 1100 – Specialist Treatment (Core & SACS)	5
AOD 1200 - Specialist Treatment in Areas of High Need (NIAS)	7
AOD 2000 - Workforce Development for Health Professional (Aboriginal)	10
AOD 2000 - Workforce Development for Health Professional (Mainstream)	12
AOD 3000 - Specialist Treatment in Regional, Rural and Remote Communities	14
AOD-GPS 1000 - General Practice Support for Drug and Alcohol Addiction	17

AOD 1100 - Specialist Treatment in Areas of High Need - Aboriginal (NIAS)

Activity Title

Specialist treatment in areas of high need - Aboriginal (NIAS)

Activity Number

1100

Existing, Modified or New Activity

Existing

Program Key Priority Area

Alcohol and Other Drugs

Aim of Activity

Increased access to targeted and culturally appropriate approaches to alcohol and other drug treatment for Aboriginal people.

Description of Activity

Culturally competent and accredited drug and alcohol specialist service providers will continue to be contracted to deliver direct alcohol and drug treatment activity.

Activities will be adjusted where necessary to ensure they align with local need, leverage other existing services, and avoid duplication.

Wherever possible, activities will be focused on intervening earlier, supporting those with mild to moderate alcohol and drug issues, addressing co-morbid mental and physical health issues and preventing relapse.

Treatment will be undertaken by suitably qualified and experienced staff from community-based facilities, via outreach or through the use of technology as appropriate.

The Primary Health Network (PHN) will focus on the management of the performance of the contracted provider/s including reviewing, monitoring, and evaluating service provision; taking into account the requirements of the Australian Government Department of Health's PHN Program Performance and Quality Framework to determine how well targeted and efficient services are delivered; and taking into account the requirements of the National Treatment Framework and National Quality Framework for Alcohol and Other Drugs.

The PHN will utilise the WA Primary Health Alliance Outcomes Framework to measure and track provider performance. It will also be an incorporated requirement of the provider to complete all data reporting via the Alcohol and Other Drug Treatment Services National Minimum Data set. The reporting domains for the Outcome Maps used in the Framework are:

- Person – client experience
- Clinical - service impact
- System - service/system integration

Provider - service sustainability including provider experience /governance. Service providers are expected to work collaboratively with others in the region to help facilitate system integration and actively seek to improve engagement with primary care to improve health outcomes for consumers.

WAPHA Needs Assessment Priorities

Priorities	Page reference
CA4.3 Increase access to targeted and culturally appropriate approaches to alcohol and other drug treatment for Aboriginal people.	122
CA4.1 Work with primary care providers and Aboriginal groups to reduce disease trends in Aboriginal communities.	121
CA4.2 Increase access to Aboriginal specific services with an Aboriginal approach to cultural wellbeing, healing, and community empowerment.	121

Indigenous Specific Comments

As well as consumer and services provider feedback WA Primary Health Alliance will continue to also utilise the WA Primary Health Alliance Strategic Aboriginal Health and Wellbeing Advisory Group (SAHWAG) as a body to inform the commissioning of culturally appropriate services. The SAHWAG is a formal advisory body formed by WA Primary Health Alliance and includes membership by Aboriginal consumers, Aboriginal community-controlled organisations, the state Aboriginal community-controlled organisation peak body and other key stakeholders including state government and Area Health Services.

Coverage

The whole Country WA PHN region.

Activity Duration

Activity Start Date 1 Jul 2019

Activity End Date 30 June 2022

Activity Planned Expenditure

Funding Stream	FY 20 21	FY 21 22	FY 22 23	FY 23 24	Total
NIAS Aboriginal and Torres Strait Islander People	\$2,136,437.00	\$2,497,049.61	\$0.00	\$0.00	\$4,633,486.61
Total	\$2,136,437.00	\$2,497,049.51	\$0.00	\$0.00	\$4,633,486.61

AOD 1100 – Specialist Treatment (Core & SACS)

Activity Title

Specialist Treatment (Core & SACS)

Activity Number

1100

Existing, Modified or New Activity

Existing

Program Key Priority Area

Alcohol and other Drugs

Aim of Activity

To increase the availability of evidence-based drug and alcohol treatment services for individuals their families/significant others and communities experiencing harm from alcohol and drug use.

To facilitate support for individuals with co-morbid mental health, physical health, and substance use issues.

To continue to build links across the broader treatment sector including with primary health care providers and mental health services.

Description of Activity

Accredited drug and alcohol specialist service providers will continue to be contracted to deliver direct alcohol and drug treatment activity.

Activities will be adjusted where necessary to ensure they align with local need and identified priorities. In scope treatment activities will be undertaken from either community-based facilities or via outreach as appropriate by suitably qualified and experienced staff. Service provider performance will be monitored by regular relationship management, six-monthly Outcome Map reporting and compliance with data and quality requirements.

The Primary Health Network (PHN) will focus on the management of the performance of the contracted provider/s including reviewing, monitoring and evaluating service provision; taking into account the requirements of the Australian Government Department of Health's PHN Program Performance and Quality Framework to determine how well targeted and efficient services are delivered; and taking into account the requirements of the National Treatment Framework and National Quality Framework for Alcohol and Other Drugs.

The PHN will utilise the WA Primary Health Alliance Outcomes Framework to measure and track provider performance. It will also be an incorporated requirement of the provider to complete all data reporting via the Alcohol and Other Drug Treatment Services National Minimum Data set. The reporting domains for the Outcome Maps used in the Framework are:

Person – client experience
 Clinical - service impact
 System - service/system integration
 Provider - service sustainability including provider experience /governance.

Service providers are expected to work collaboratively with others in the region to help facilitate system integration, and actively seek to improve engagement with primary care to improve health outcomes for consumers.

WAPHA Needs Assessment Priorities

Priorities	Page reference
CAOD3.3 Increase access to community-based early intervention and harm reduction services in areas with high rates of harmful alcohol and other drug use	117
CA4.3 Increase access to targeted and culturally appropriate approaches to alcohol and other drug treatment for Aboriginal people	122
CAOD3.4 Support education campaigns aimed at reducing harmful alcohol and drug use.	118

Coverage

The whole Country WA PHN region.

Activity Duration

Activity Start Date 1 Jul 2019

Activity End Date 30 June 2023

Activity Planned Expenditure

Funding Stream	FY 20 21	FY 21 22	FY 22 23	FY 23 24	Total
Core Drug and Alcohol and Operational	\$844,861.00	\$884,703.55	\$884,703.55	\$0.00	\$2,614,268.10
Social and Community Services Award (SACS) Component	\$228,272.15	\$0.00	\$0.00	\$0.00	\$228,272.15
Total	\$1,073,133.15	\$884,703.55	\$884,703.55	\$0.00	\$2,842,540.25

AOD 1200 - Specialist Treatment in Areas of High Need (NIAS)

Activity Title

Specialist Treatment in Areas of High Need (NIAS)

Activity Number

1200

Existing, Modified or New Activity

Existing

Program Key Priority Area

Alcohol and other Drugs

Aim of Activity

To increase the availability of evidence-based, culturally appropriate drug and alcohol treatment services for individuals their families/significant others and communities experiencing harm from alcohol and drug use.

To facilitate support for individuals with co-morbid mental health, physical health, and substance use issues.

To continue to build links across the broader treatment sector including with primary health care providers and mental health services.

Description of Activity

Accredited drug and alcohol specialist service providers will continue to be contracted to deliver direct alcohol and drug treatment activity. Treatment activities include brief intervention, counselling, relapse prevention, case management, coordination, post treatment support and facilitating access to specialist residential withdrawal and rehabilitation services.

Activities will be adjusted where necessary to ensure they are in scope, align with local need, leverage other existing services, and avoid duplication. Wherever possible, treatment activities will be focused on intervening earlier, supporting those with mild to moderate alcohol and drug issues, addressing co-morbid mental and physical health issues, and preventing relapse.

Treatment will be undertaken by suitably qualified and experienced staff from community-based facilities, via outreach, or through the use of technology (telephone or video conferencing) as appropriate.

Service providers are expected to work collaboratively with others in the region to help facilitate system integration and actively seek to improve engagement with primary care.

The Primary Health Network (PHN) will focus on the management of the performance of the contracted provider/s including reviewing, monitoring and evaluating service provision; taking into account the requirements of the Australian Government Department of Health's PHN Program Performance and Quality Framework to determine how well targeted and efficient services are delivered; and taking into account the requirements of the National Treatment Framework and National Quality Framework for Alcohol and Other Drugs.

The PHN will utilise the WA Primary Health Alliance Outcomes Framework to measure and track provider performance. It will also be an incorporated requirement of the provider to complete all data reporting via the Alcohol and Other Drug Treatment Services National Minimum Data set. The reporting domains for the Outcome Maps used in the Framework are:

- Person – client experience
- Clinical - service impact
- System - service/system integration
- Provider - service sustainability including provider experience /governance.

WAPHA Needs Assessment Priorities

Priorities	Page reference
CAOD3.3 Increase access to community-based early intervention and harm reduction services in areas with high rates of harmful alcohol and other drug use.	117
CAOD3.4 Support education campaigns aimed at reducing harmful alcohol and drug use.	118

Coverage

The whole Country WA PHN region.

Activity Duration

Activity Start Date 1 Jul 2019

Activity End Date 30 Jun 2022

Activity Planned Expenditure

Funding Stream	FY 20 21	FY 21 22	FY 22 23	FY 23 24	Total
NIAS Operational and Mainstream	\$1,012,779.00	\$1,335,471.20	\$0.00	\$0.00	\$2,348,250.20
Total	\$1,012,779.00	\$1,335,471.20	\$0.00	\$0.00	\$2,348,250.20

AOD 2000 - Workforce Development for Health Professional (Aboriginal)

Activity Title

Workforce Development for Health Professional (Aboriginal)

Activity Number

2000

Existing, Modified or New Activity

Existing

Program Key Priority Area

Alcohol and other Drugs

Aim of Activity

To increase the capability and confidence of the generalist and specialist health workforce to effectively recognise and respond to problematic alcohol and drug use among Aboriginal people.

This will be achieved by increasing the appropriateness of referrals to drug and alcohol specialist service providers and increasing the uptake of screening, brief intervention, and management of people with alcohol and drug issues within a primary care setting.

Description of Activity

Supporting provision of evidence-informed and culturally secure education and training resources and quality improvement activities designed to support health care professionals to provide culturally appropriate alcohol and drug treatment and support services for Aboriginal people.

The activity will utilise various modalities including face to face sessions in regional centres, small group sessions within practices, and promotion of online/technology-based training modules and resources such as webinars and special interest groups.

Increasing awareness of available specialist treatment services and improving effectiveness of referral pathways by engaging with local experts, encouraging development of multi-disciplinary relationships and promoting utilization of HealthPathways, Practice Assist and MyHealthRecord.

Support education and training activities which promote practices to provide information on appropriate use of language, to reduce stigma and the discrimination of Aboriginal people who experience harm from alcohol and other drug use, encouraging the engagement of consumers and significant others in service design and recognising problematic alcohol and drug use as a health issue and one that requires a holistic, person centred response.

WAPHA Needs Assessment Priorities

Priorities	Page reference
CA4.3 Increase access to targeted and culturally appropriate approaches to alcohol and other drug treatment for Aboriginal people.	122
CA4.4 Assist Primary Health Care Providers to adopt culturally appropriate models of care for Aboriginal populations, Culturally and Linguistically Diverse groups.	122
CA4.2 Increase access to Aboriginal specific services with an Aboriginal approach to cultural wellbeing, healing, and community empowerment.	121

Indigenous Specific Comments

WA Primary Health Alliance in consultation with a range of stakeholders, produced the Commissioning for Better Health report. A key activity for WA Primary Health Alliance in the report is the delivery of a Primary Care Workforce Development Strategy for Western Australia. This strategy will be developed in collaboration with the WA Department of Health, WA Department of Training and Workforce Development, peak industry bodies for each of the primary care professional groups, and service providers. A specific focus of this Strategy will be the aim to increase Aboriginal employment in the primary care sector in Western Australia. (p.50).

Coverage

The whole Country WA PHN region

Activity Duration

Activity Start Date 01 July 2019

Activity End Date 30 June 2022

Activity Planned Expenditure

Funding Stream	FY 20 21	FY 21 22	FY 22 23	FY 23 24	Total
NIAS Aboriginal and Torres Strait Islander People	\$0.00	\$331,745.38	\$0.00	\$0.00	\$331,745.38
Total	\$0.00	\$331,745.38	\$0.00	\$0.00	\$331,745.38

AOD 2000 - Workforce Development for Health Professional (Mainstream)

Activity Title

Workforce Development for Health Professional (Mainstream)

Activity Number

2000

Existing, Modified or New Activity

Existing

Program Key Priority Area

Alcohol and other Drugs

Aim of Activity

To increase the capability and confidence of the generalist and specialist health workforce to recognise and respond to problematic alcohol and drug use by:

- increase the appropriateness of referrals to drug and alcohol specialist service providers, and
 - increase uptake of screening, brief intervention, and management of people with alcohol and drug issues within a primary care setting.
-

Description of Activity

Working with health professionals' activities will include:

- evidence based education and training utilising various modalities including face to face sessions in regional centres, small group sessions within practices, and promotion of online/technology-based training modules and resources such as webinars and special interest groups.
 - awareness raising of available specialist treatment services, improving effectiveness of referral pathways by engaging with local experts, encouraging development of multi-disciplinary relationships, and promoting utilization of HealthPathways, Practice Assist and MyHealthRecord.
 - provision of information on appropriate use of language, to reduce stigma and the discrimination of people who experience harm from alcohol and/ or other drug use, encouraging the engagement of consumers and significant others in service design and recognising problematic alcohol and drug use as a health issue.
 - awareness and support for the provision of holistic, person centred care that responds to multi-morbidity including mental health issues and physical health conditions.
 - facilitating opportunities to improve the cultural competence and clinical safety of services through continuous quality improvement and maintenance of appropriate accreditation.
-

WAPHA Needs Assessment Priorities

Priorities	Page reference
CAOD3.1 Promote integrated and coordinated care pathways for clients with mental health condition and harmful alcohol and other drug use.	117
CAOD3.2 Build General Practice workforce capability to recognise and respond to alcohol and other drug-related issues.	117
CAOD3.3 Increase access to community-based early intervention and harm reduction services in areas with high rates of harmful alcohol and other drug use	117

Coverage

The whole Country WA PHN region.

Activity Duration

Activity Start Date 01 Jul 2019

Activity End Date 30 June 2022

Activity Planned Expenditure

Funding Stream	FY 20 21	FY 21 22	FY 22 23	FY 23 24	Total
NIAS Operational and Mainstream	\$0.00	\$86,833.50	\$0.00	\$0.00	\$86,833.50
Total	\$0.00	\$86,833.50	\$0.00	\$0.00	\$86,833.50

AOD 3000 - Specialist Treatment in Regional, Rural and Remote Communities

Activity Title

Specialist Treatment in Regional, Rural and Remote Communities

Activity Number

3000

Existing, Modified or New Activity

Existing

Program Key Priority Area

Alcohol and other Drugs

Aim of Activity

To increase the availability of evidence-based, culturally appropriate drug and alcohol treatment services for regional, rural, and remote individuals, their families and communities experiencing harm from alcohol and drug use.

To facilitate support for clients with co-morbid mental and physical health issues and poly drug use.

To continue to build links across the broader treatment sector including with primary health care providers and mental health services.

Description of Activity

The activity provides greater access for clients living in rural and remote areas by continuing to commission accredited specialist alcohol and drug treatment services in the Pilbara, Midwest, and Goldfield's regions of Western Australia. In the WA Primary Health Alliance Country WA Primary Health Network (PHN) Needs Assessment, the service locations of the Gascoyne and Goldfields are evidenced as being higher needs given per capita estimates of consumption from the National Alcohol Sales Data project. Given the geographic size of Country WA, in some instances, the funding is utilised to reach clients who are over 600kms from a main town [central hub] in their region.

The activity seeks to:

- leverage the expertise and governance of existing specialist alcohol and drug service providers by commissioning additional capacity for greater reach into underserved locations.
- facilitate increased access to treatment and support services for Aboriginal and Torres Strait Islander people living in remote communities.
- integrate with WA Primary Health Alliance's commissioned mental health services and partner with primary care providers to ensure appropriate management and support of

mental and physical health needs.

The PHN will focus on the management of the performance of the contracted provider/s including reviewing, monitoring and evaluating service provision; taking into account the requirements of the Australian Government Department of Health's PHN Program Performance and Quality Framework to determine how well targeted and efficient services are delivered; and taking into account the requirements of the National Treatment Framework and National Quality Framework for Alcohol and Other Drugs.

The PHN will utilise the WA Primary Health Alliance Outcomes Framework to measure and track provider performance. It will also be an incorporated requirement of the provider to complete all data reporting via the Alcohol and Other Drug Treatment Services National Minimum Data set. The reporting domains for the Outcome Maps used in the Framework are:

Person – client experience

Clinical - service impact

System - service/system integration

Provider - service sustainability including provider experience /governance.

Service providers are expected to work collaboratively with others in the region to help facilitate system integration and actively seek to improve engagement with primary care.

The PHN will continue to monitor and assess the impact of COVID-19 on access to the primary health care services commissioned within this activity. Where required, the commissioned services may be modified, and additional services commissioned to help the PHN to continue to meet the aims of the activity and the needs of the priority target groups

WAPHA Needs Assessment Priorities

Priority	Page reference
CAOD3.3 Increase access to community-based early intervention and harm reduction services in areas with high rates of harmful alcohol and other drug use.	117

Coverage

The Country WA PHN regions of East Pilbara, Mid-West, West Pilbara, Gascoyne, and Goldfields.

Activity Duration

Activity Start Date 01 July 2019

Activity End Date 31 December 2022

Activity Planned Expenditure

Funding Stream	FY 20 21	FY 21 22	FY 22 23	FY 23 24	Total
Increasing Access to Drug and Alcohol Treatment Services in Regional, Rural and Remote Areas	\$839,945.51	\$342,945.51	\$0.00	\$0.00	\$1,182,891.02
Total	\$839,945.51	\$342,945.51	\$0.00	\$0.00	\$1,182,891.02

AOD-GPS 1000 - General Practice Support for Drug and Alcohol Addiction

Activity Title

General Practice Support for Drug and Alcohol Addiction

Activity Number

1000

Existing, Modified or New Activity

Existing

Program Key Priority Area

Alcohol and Other Drugs

Aim of Activity

To increase knowledge, skills, capability, and confidence of the primary healthcare workforce to recognise and respond to problematic alcohol and other drug use. This includes:

- increasing the appropriateness of referrals to drug and alcohol specialist service providers.
 - increasing the uptake of screening, brief intervention, and management of people with alcohol and drug issues within a primary care setting.
 - increasing provision of holistic, person centred care that responds to multi-morbidity including mental health issues, substance use and/or physical health conditions.
 - reducing stigma and the discrimination of people who experience harm from alcohol and/or other drug use.
-

Description of Activity

The objectives of the activity are to:

1. Provide support to general practitioners and other health professionals to build the capacity of the health workforce to deliver high quality care for clients with drug and alcohol issues.
2. Promote the education package and training grants for drug and alcohol addiction to general practitioners delivered through the Australian College of Rural and Remote Medicines and Royal Australian College of General Practitioners to strengthen the capacity of general practitioners to address drug and alcohol issues in their community.
3. Assist general practitioners and other health professionals to enhance their knowledge and application of alcohol and other drug addiction referral pathways, supporting improved access to drug and alcohol treatment.
4. Increase awareness of and support general practitioners in using the range of evidence-based resources available to improve drug and alcohol addiction treatment.

To achieve these objectives the following activities will occur:

- establishment (or enhancement of existing) communities of practice, encouraging participation from practitioners who have recently undertaken alcohol and other drugs education and training, as well as those with more experience.
- facilitating the development, adaptation, or utilisation of quality improvement activities to address priority topics in the general practice setting.
- supporting development and use of clinical pathways and tools, including continued promotion of HealthPathways and the Drug and Alcohol Clinical Advisory Service.
- where feasible, partnering with RACGP and ACRRM to coordinate local education and training events supporting the inclusion of local content and multi-disciplinary expertise.
- utilising WA Primary Health Alliance’s communication channels to promote available education and training activities, evidence-based resources, and topics of local interest. Avenues include Practice Assist, HealthPathways, Podcasts/Webinars, Primary Care Connect e-newsletter and social media channels.
- leveraging existing relationships with general practice to promote available education and training packages, encouraging whole of practice engagement in continuous quality improvement activities.
- enhancing existing alcohol and other drugs specialist in-reach services, non-dispensing pharmacists, and social workers to promote messages and encouraging engagement in education and training opportunities.
- supporting increased use of existing training pathways and student placements for primary care practitioners to engage with the alcohol and other drugs specialist sector.
- leveraging WA Primary Health Alliance’s existing education and training program "Treating Alcohol and Drugs in Primary Care" and continue to build on established networks and relationships between local primary care practitioners and multi-disciplinary specialists.

WAPHA Needs Assessment Priorities

Priorities	Page reference
CAOD3.1 Promote integrated and coordinated care pathways for clients with mental health condition and harmful alcohol and other drug use.	117
CAOD3.2 Build General Practice workforce capability to recognise and respond to alcohol and other drug-related issues.	117
CAOD3.3 Increase access to community-based early intervention and harm reduction services in areas with high rates of harmful alcohol and other drug use	117

Coverage

The whole Country WA PHN region.

Activity Duration

Activity Start Date 01 May 2020

Activity End Date 31 December 2022

Activity Planned Expenditure

Funding Stream	FY 19 20	FY 20 21	FY 21 22	FY 22 23	Total
General Practice Support for Drug and Alcohol Addiction Treatment	\$129,600.00	\$32,400.00	\$97,200.00	\$0.00	\$259,200.00
Total	\$129,600.00	\$32,400.00	\$97,200.00	\$0.00	\$259,200.00
