



WAPHA
WA Primary Health Alliance

phn
PERTH NORTH, PERTH SOUTH,
COUNTRY WA
An Australian Government Initiative

WA Primary Health Alliance

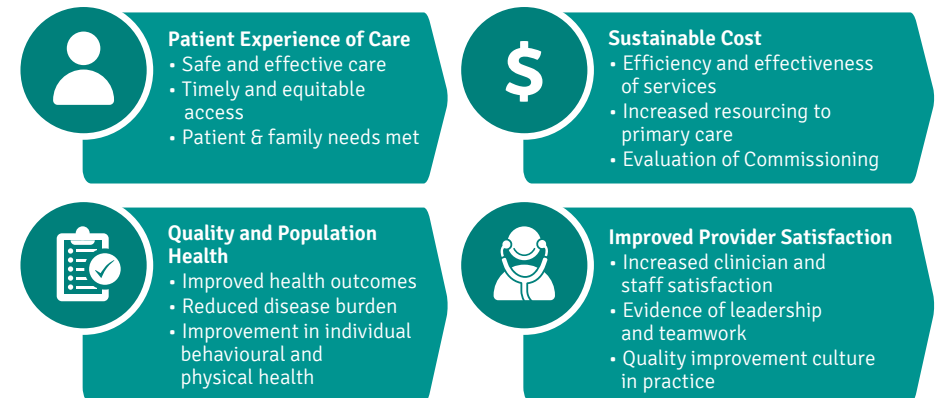
Improved health equity
in Western Australia

The three WA Primary Health Networks (PHNs), operated by WA Primary Health Alliance (WAPHA), facilitate changes to the health system that will improve health outcomes and deliver better value to our community.

These changes require the health system to move to integrated place-based models of care that result in the improved health status of the community.

By reimagining health as place-based, we seek a system that opens out the definition of health from clinical care to one that encompasses wider determinants. Our role is to ensure the services and resources that already exist are aligned and utilised to contribute to improved and more equal health outcomes for people and their communities.

WAPHA's overarching objective is to achieve integration and co-ordination across a diverse network of providers and payers, and to do this through 'curating' the system. We recognise the importance of creating value, from both a provider and payer perspective. Our outcome measures, guided by the quadruple aim in healthcare, ensure that these aims are pillars in driving health outcomes.



WAPHA provides an optimal environment for our stakeholders to come together and develop a shared perspective to collectively improve equity and health outcomes for our diverse communities.

With our clear vision for excellence in primary health care, WAPHA will continue to work towards improving health outcomes for Western Australians, by using its once in a generational opportunity to steward innovation and reform in the delivery of primary health care within the WA community.



www.wapha.org.au

Acknowledgements

WA Primary Health Alliance acknowledges the Traditional Owners of the country on which we work and live and recognises their continuing connection to land, waters and community. We pay our respect to them and their cultures and to Elders both past and present.



Australian Government

Disclaimer

While the Australian Government Department of Health has contributed to the funding of this material, the information contained in it does not necessarily reflect the views of the Australian Government and is not advice that is provided, or information that is endorsed, by the Australian Government. The Australian Government is not responsible in negligence or otherwise for any injury, loss or damage however arising from the use or reliance on the information provided herein.

About WAPHA

WAPHA oversees the strategic commissioning functions of the three PHNs and is where primary health and social care come together at the State and local levels.

The WA PHNs are:

- Perth North PHN.
- Perth South PHN; and
- Country WA PHN.

WAPHA's whole-of-state organisational model is based on localisation where essential and centralisation where possible. WAPHA applies a systems approach and emphasises the 'whole' of the health and social care system in its commissioning and system curation functions. One person one place, one system.

WAPHA promotes a value driven, vision led and person centred approach to primary health care.

Vision

Improved health equity in Western Australian.

Mission

To build a robust and responsive patient centred primary health care system through innovative and meaningful partnerships at the local and state-wide level.

Purpose

To facilitate changes to the health system that lead to improved and sustainable health and social care outcomes and better value to our community.

Values

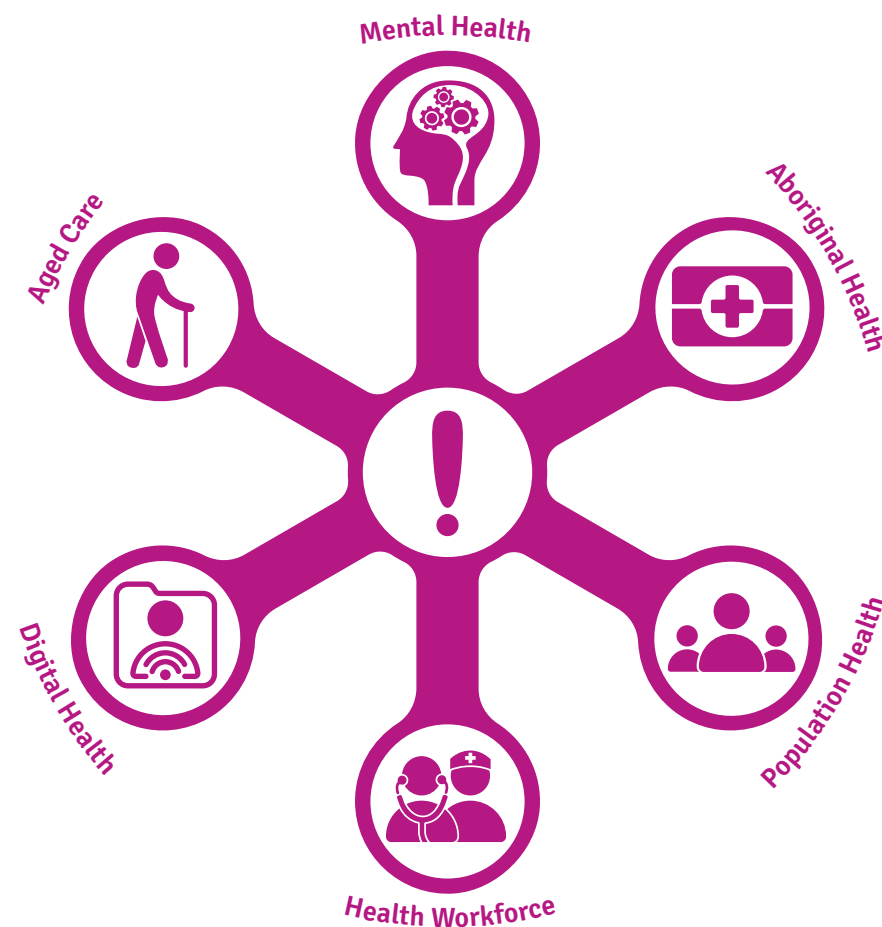
We work with key stakeholders, providers, community and other commissioning bodies who share, and demonstrate alignment with, WAPHA's values.

Our values are:



Addressing Health Priorities

Together with our partners, stakeholders and communities the PHNs will facilitate changes to the health system that improve health outcomes and deliver better value to the community in the areas of:



Primary Health Networks (PHNs)

Primary Health Networks are an Australian Government initiative. There are 31 PHNs across Australia and their two key objectives are:

- Increase the efficiency and effectiveness of medical services for patients, particularly those at risk of poor health outcomes; and
- Improve coordination of care to ensure patients receive the right care, in the right place at the right time.

The PHNs are committed to working in partnership across the sector to:

- Provide targeted support to assist general practices to improve relevant practice systems and processes to enable general practices to deliver enhanced primary health care models and high quality clinical outcomes;
- Improve system integration;
- Increase the efficiency and effectiveness of medical services;
- Improve coordination of care to ensure people receive the right care, in the right place at the right time;
- Commission localised solutions, services or activities to meet the health and service needs for their region;
- Develop service innovation; and
- Build an evidence base to inform ongoing investment strategies.



PHN priorities

We will commission primary health care solutions, services or activities that meet one or more of the five priority health areas, identified through the PHNs' Needs Assessments. The five keys priority health areas are:



Keeping people well in the community



People with multiple morbidities especially chronic co-occurring physical conditions, mental health conditions and drug and alcohol treatment needs



Services designed to meet the health needs of vulnerable and disadvantaged people, including those of Aboriginal heritage



System navigation and integration to help people get the right services, at the right time in the right place



Capable workforce tailored to these priorities

The WAPHA Way



People & Communities

- Empower people to develop their health and system literacy
- Understand and respond to gaps in health equity and access for underserved and disadvantaged communities
- Have a whole of system focus that puts people and communities first
- Be responsive to the diversity of our communities
- Deliver sustainable solutions that are responsive to local needs and operate effectively in a broader social system
- In consultation with community members, develop locally relevant services that optimise resources and keep people well in our communities



General Practice & Primary Care Development

- Build capacity and capability in primary health care
- Support and be guided by GPs and other clinicians as leaders in our health system
- Understand and respond to workforce service provider needs
- Facilitate networks of GPs and Allied Health providers to support team-based approaches to care
- Advocate and support innovation in primary health care that is underpinned by patient centred medical home based principles



Strengthening Partnerships & Developing Workforce

- Engage our communities and clinicians across the range of our activities
- Collaborate with public, private and not-for-profit organisations
- Facilitate partnerships between health professionals across sectors at both service delivery and system levels
- Bring together key stakeholders and communities to work to a shared purpose



Strategic Planning & Innovation

- Prioritise what we do, based on evidence, local relevance and evaluation
- Align all activities to the findings of the PHNs' Needs Assessments, and the guidance of local and Commonwealth strategic priorities
- Understand our health system and use existing resources as a starting point for change
- Apply an integrated, evidence and outcomes based, commissioning framework to support the development of place-based systems of care
- Focus our organisational performance on innovation and system change
- Lead the development of new models of place-based primary health care that span organisational and service boundaries



System Enablers

- Develop and implement new initiatives to improve health outcomes and efficiency and sharing of health information through digital health strategies including My Health Record
- Use data to drive continuous improvement, safety and quality
- Prioritise the development and implementation of evidence based clinical pathways (HealthPathways WA)



Organisational Excellence

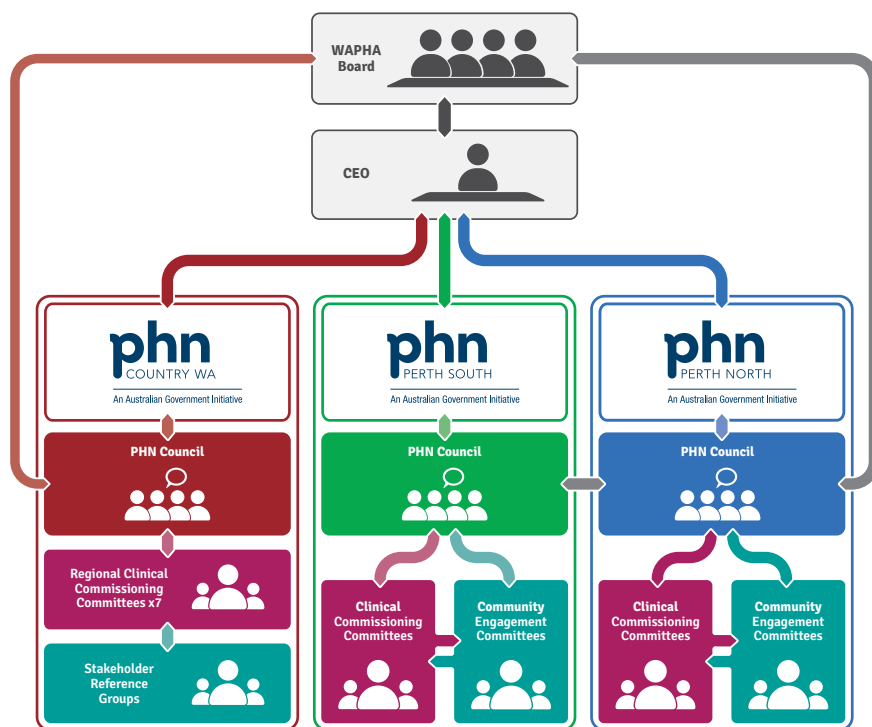
- Support our performance with responsive and rigorous administration and governance
- Develop our organisational capability by creating a culture that supports and develops our teams to work together with common purpose, shared values and respect for each person's contribution to our goals
- Measure and evaluate our organisational performance to maintain accountability and assess the need for change

Our Governance

WAPHA recognises the importance of good governance as it leads to strong management, optimal performance, responsible stewardship of public money, meaningful public engagement, and ultimately, good outcomes.

Having good governance processes in place builds public and stakeholder confidence in WAPHA and the PHNs' commitment to effectively and efficiently commission solutions, services or activities that meet the health needs of the community.

WAPHA is led by a strong skills based Board comprised of highly experienced individuals who bring a unique perspective on integrated primary health care across WA. Collectively the Board represents a valuable body of experience and willingness to steward innovation and reform in the delivery of health care within the Western Australian community.



PHN Councils and Committees

WAPHA and the PHNs commit to ensuring we understand the health and social needs of the community, and that we commission solutions that result in healthier communities, empowered individuals and a sustainable primary health care workforce and system.

The people best placed to support this commitment are health professionals and the community. While we work with a broad range of stakeholders, there are three integral advisory groups that each PHN has established to ensure they have both a clinical perspective and community voice informing commissioning decisions.

PHN Council

The PHN Council is the PHNs' principal strategic advisory body. The PHN Council reports to, provides recommendations and informs the WAPHA Board about opportunities to improve medical and health care services through strategic, cost effective investments and innovations.

Clinician Commissioning Committees

The Perth North and Perth South PHNs have each established a Clinical Commissioning Committee (CCC). The Country WA PHN has established a Regional Clinical Commissioning Committee (RCCC) in each of its seven regional areas.

The CCCs/RCCCs are the PHN's key clinical advisory group which are GP led and comprise of GPs, clinicians and other health professionals. The CCC/RCCC is the PHN's 'critical friend', engaging with local health professionals to bring a clinical perspective to the PHN's activities. They inform and advise the PHN and the PHN Council about local clinical issues, pathways and system/service enhancements that will improve quality, and deliver better health outcomes in their region.

Community Engagement

The Perth North and Perth South PHNs have each established a Community Engagement Committee (CEC). The CEC is the PHN's 'critical friend' that brings the community voice to the PHN's activities. The CEC engages with the local community to provide the PHN, and the PHN Council, with the community's perspective about their experiences and expectations of primary health care in targeted areas in the region. This perspective informs the PHNs' decisions to ensure the solutions are person centred, locally relevant, and align to the PHN's Needs Assessment and local and Commonwealth strategic priorities.

The Country WA PHN seeks its community advice through Stakeholder Reference Groups established by the RCCCs and/or existing groups such as the District Health Advisory Councils and Aboriginal Health Planning Forums. These groups provide a community perspective to the Regional Clinical Commissioning Committee on the primary health care needs and services within targeted areas in their respective regions.



join the conversation
phexchange.wapha.org.au



facebook.com/waphaphns



[@WAPHA_PHNs](https://twitter.com/WAPHA_PHNs)



phexchange@wapha.org.au