



Strategic Plan 2017-2020

Strategy Overview

About WAPHA

WAPHA oversees the strategic commissioning functions of the three WA PHNs; Perth North, Perth South and Country WA.

WAPHA's whole-of-state organisational model is based on localisation where essential and centralisation where possible.

WAPHA applies a systems approach and emphasises the 'whole' of the health and social care system in its commissioning and system integration functions.

WAPHA promotes a value-driven, vision-led and person centred approach to primary health care.

About WAPHA's strategy

This strategy provides an overview of the strategic priorities and key activities for WAPHA for the period 2017-2020.

The priorities and activities have been aligned to WAPHA's vision and mission.

This strategy will enable WAPHA to achieve its purpose and improve the primary care system and health outcomes for people in WA.

WAPHA's Strategy on a Page

Our Vision:

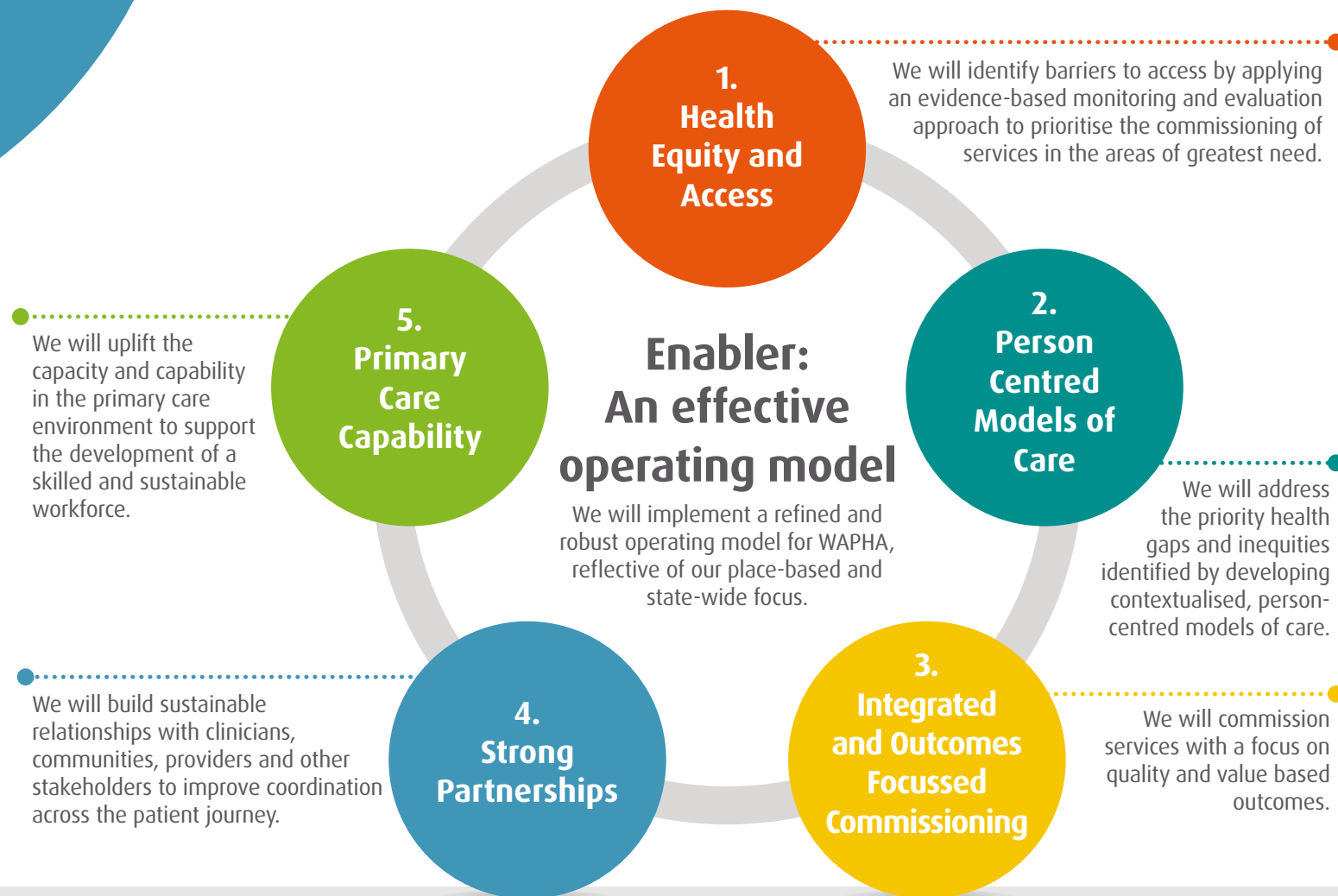
Improved health equity in Western Australia.

Our Values:

Courage, Humility, Respect, Wisdom, Integrity

Our Mission:

To build a robust and responsive person centred primary health care system through innovative and meaningful partnerships to operate effectively at a local and state-wide level.



Strategy Roadmap: Over the next three years we will...

2017

- ✓ Design integrated models of care which address the needs of people in priority groups, in particular Mental Health, Aboriginal Health, Population Health and Chronic Disease, and Aged Care.
- ✓ Utilise digital health platforms effectively to improve continuity and access to care.

- ✓ Develop WAPHA's approach to co-design and co-production of services in genuine partnership with providers and communities.
- ✓ Adopt an integrated system-wide commissioning model that focuses on quality, outcomes and value.

- ✓ Engage and build sustainable relationships with clinicians, communities, providers, consumers and other stakeholders.
- ✓ Work in collaboration with other PHNs to share best practice approaches.

- ✓ Develop primary care capacity and capability to support sustainable business models and improved models of care.
- ✓ Develop a data-driven culture of decision making, with improved management and sharing of quality data and information.



2020



For more information
www.wapha.org.au
info@wapha.org.au
08 6272 4900

 /waphaphns

 @WAPHA_PHNs

This information is available in an alternative format on request
Ph: (08) 6272 4900

Acknowledgment

WA Primary Health Alliance acknowledges the Traditional Owners of the country on which we work and live, and recognise their continuing connection to land, waters and community. We pay our respects to them and their cultures, and to Elders both past and present.



Australian Government

Disclaimer

While the Australian Government Department of Health has contributed to the funding of this material, the information contained in it does not necessarily reflect the views of the Australian Government and is not advice that is provided, or information that is endorsed, by the Australian Government. The Australian Government is not responsible in negligence or otherwise for any injury, loss or damage however arising from the use or reliance on the information provided herein.